

SKP Series

HYBRID RAPID COATING IN CHAMBER
UTILIZE YOUR PRODUCTION RHYTHM

簡介 Introduction

大永真空『SKP-爐內塗佈快速真空鍍膜機』是一款適用於車燈塑料反射罩、車燈內部框板和車燈內飾品等的快速型鋁蒸鍍設備。其結合PVD及PECVD技術，可在同一個真空腔體中，完成底漆、鍍膜及面漆的製程。更具有高良率、緊湊且快速鍍膜的特色，可縮減作業等待時間，搭配射出機的生產業務，讓企業生產效率達到最佳化。

SKP- Hybrid Rapid Coating in chamber is a evaporation metalizer that designed and developed to apply for automotive light reflector, bezel and trinkets. With the combination of PVD & PECVD coating process which carry out top coat, base coat and metalizing process that lead to various features such as high-yield, rapid coating process that reducing the buffer time of the production cycle and futher increase the efficiency of production.



主要規格 Specification

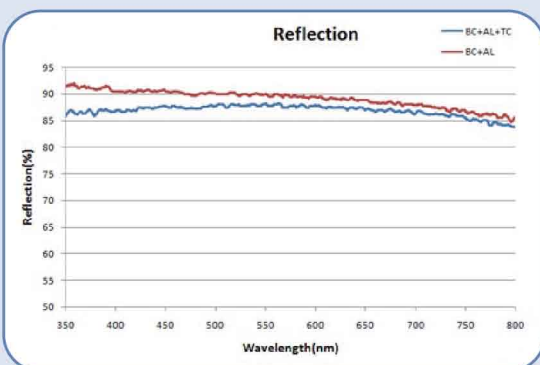
SKP SERIES		
Model	SKP-1000	SKP-1500
Chamber Dimension W x H (mm)	1000 x 1850	1500 x 1850
Number of Planetary Axis	1	2
Efficiency Height (mm)	1500	1500
Efficiency Diameter(mm)	Ø700	Ø500
Vacuum Deposition Method	Thermal Evaporation	
Plasma Polymerization	MF PECVD Process	
Number of filament	18~28 Pieces	
Filament Power Supply	30 kW	
Plasma Electrode	Plate to Plate 1 Set	Plate to Plate 2 Sets
Plasma Power Frequency/Power Supply	MF 40 kHz/ 10 kW	
Ultimate Vacuum Pressure (Torr)	5x10 ⁻⁶	
Cycle Time	≤ 10 mins	≤ 12 mins
Power Supply / 3 Phase, 380V	105 kVA	115 kVA

※ Specification might vary due to any customization demand.

環測結果 Test Performance

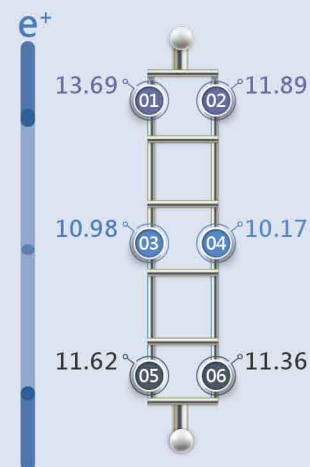
Testing Item	Specification	Result
Water immersion (ASTM D 870)	40°C/30hr	Pass
Adhesion (ASTM D 3359-97)		Pass
	<ol style="list-style-type: none"> Make two cuts in the film that intersect near their middle as drawing. Place the center of the tape at the intersection of the cuts with tape running in the same direction as the smaller angle. Remove the tape and pulling it off rapidly (not jerked) back upon itself at as close to an angle of 180° as possible. 	
	Corrosion Barrier 1% KOH/10min	
Surface	No haze, yellow or rainbow color	Pass

鍍膜反射率和膜厚數據 Reflectance and film thickness data.

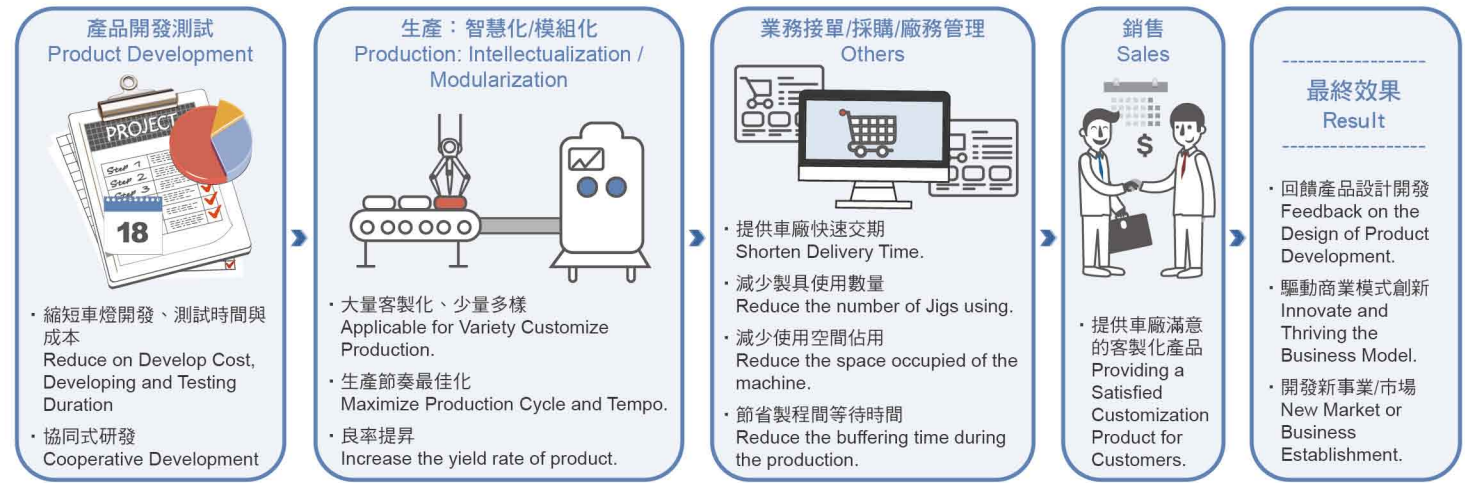


均勻度 Homogeneity of film

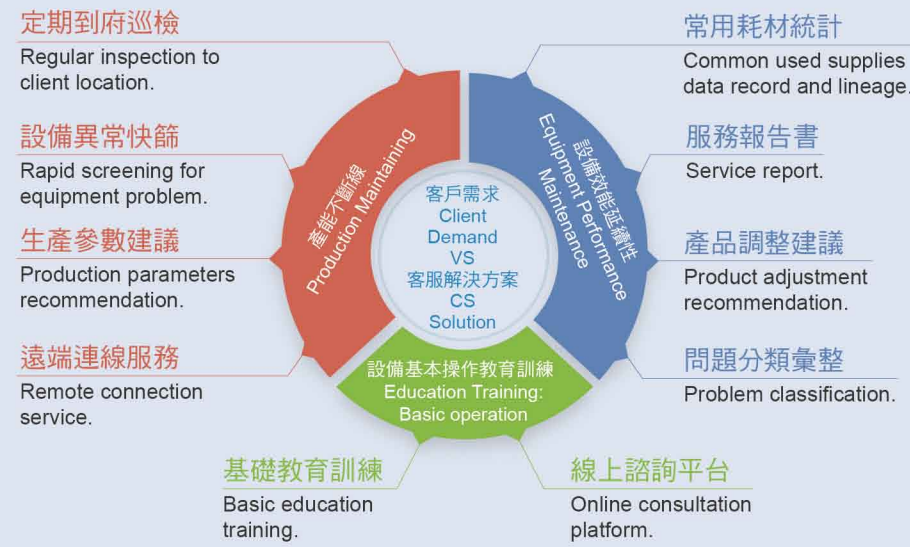
被鍍物無論放置於上、中、下方，膜厚相近，鍍膜均勻度良好。Location of Substrate on on top, mid and bottom of the every jig are equally coated and adhere with homogeneous thin film.



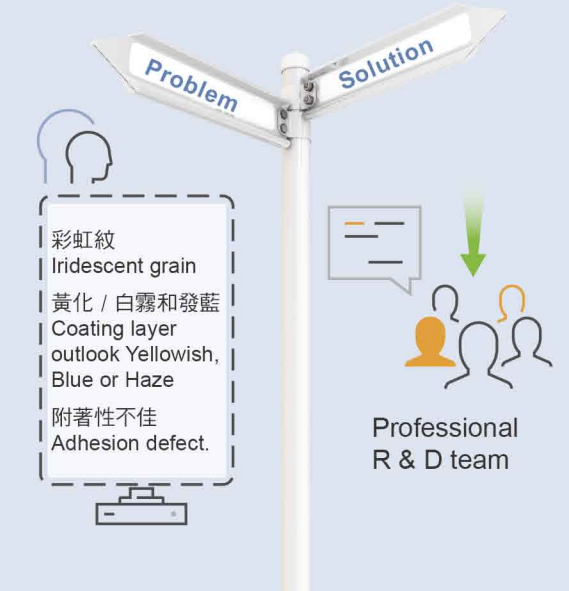
效益 Benefits



客服中心 Customer Service



關鍵技術服務 Technical services



全方面解決方案 Total solution

